

GET THE FREEDOM OF UNTETHERED BUSINESS

On the go – SwipeSimple Mobile App

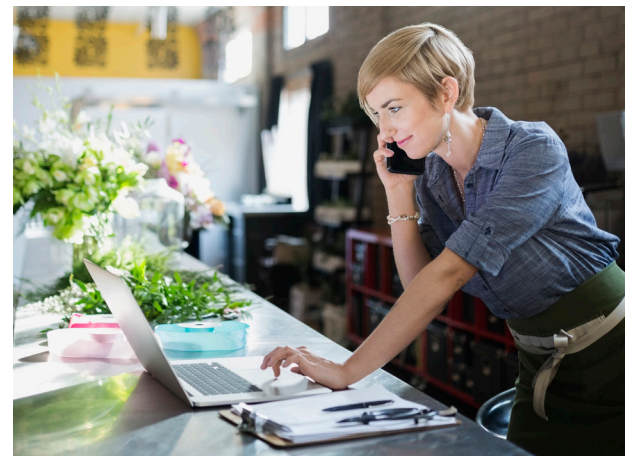
- SwipeSimple is the best mobile payment acceptance experience for small businesses. Accept payments with any iOS or Android device with enhanced security and reliability.
- Easy-to-use technology to accept EMV Quick Chip, contactless, or magnetic stripe payments anywhere.
- Accept payments when a wireless connection isn't available.
- EMV Quick Chip and contactless-enabled card readers.

In your store – SwipeSimple Register

- Modern, easy-to-use solution that replaces traditional countertop cash registers and payment terminals.
- Works with any iOS or Android device.
- Optional receipt printers and cash drawers available.
- Powerful software for business management and reporting.

At your computer – SwipeSimple Merchant Web Dashboard

- Accept payments when customer cards aren't present, create and send invoices, store customer cards, schedule payments, and gain business insights.
- Address Verification Service to reduce fraud and lower transaction fees.
- Maintain customer information and cards on file to offer installment payments, set up subscriptions, and schedule future payments.
- Create favorites pages for faster checkout.
- Manage discounts and local tax rates.
- Access reports to gain business and customer insights.
- Qualify for lower interchange fees for B2B transactions by adding tax and reference number fields.





Merchants selling on the go

Swift B250 card reader

- Accept mobile wallets and NFC contactless payments including Apple Pay and Google Pay in addition to EMV chip cards and magnetic stripe payments.
- Retail-friendly - switch between mobile, countertop, and in-store.
- Bluetooth low energy - easily connect to virtually any smartphone or tablet.
- Dimensions: 2.6" x 0.7" x 2.4"
- Weight: 2.36 oz

SM-L200 bluetooth receipt printer

- For merchants selling on the go who want to offer printed receipts.
- Compatible with any SwipeSimple card reader and almost all iOS or Android mobile devices.
- The thermal printer doesn't require ink/toner cartridges.



Businesses with lower transaction volume

Swift B250 card reader

Swift B250 charging stand

- Keeps card reader charged and stabilized while completing transactions.
- Makes it easy to accept payments with a smartly designed upward tilt.
- Has a simple and sleek interface.

mPOP cash drawer and receipt printer

- For countertop or in-store merchants who want an integrated cash register with payment acceptance and many additional features.
- Recommended when bundled with a Swift B250 card reader and charging stand, but compatible with any SwipeSimple card reader.



Businesses with higher transaction volume

Swift B250 card reader

Swift B250 charging stand

CD3-1616 cash drawer

- Automatic cash drawer with room for five bill denominations and eight coin slots.
- Features manual and auto-release.

TSP143IIIBi bluetooth receipt printer

- Three-inch receipt printer for merchants with larger transaction volume.
- Equipped with Bluetooth Low Energy.
- Because it uses thermal printing technology, you never have to buy toners or ink cartridges.